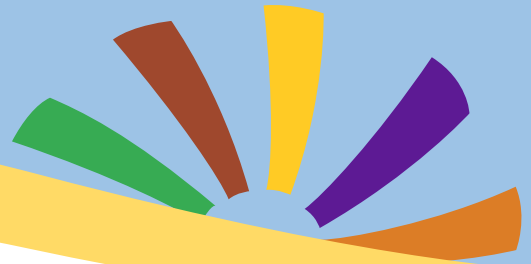


Admission Matrix



Applying for Kindergarten

Students applying to kindergarten must score **17 points** on the admission matrix to be eligible for admission to Lake Forest Charter School.

How is the matrix score calculated?

Matrix scores are calculated by adding the points received for each of the **5 components** of the admission matrix to create the final matrix score. All final matrix scores with admission results will be communicated via US Mail by February 28, 2018. Please feel free to contact the admission office at 504-826-7140 or admissions@lakeforestcharter.org with any questions.



Points	Reading %	Math %	Orientation	Survey	Portfolio
10	90 - 99	90 - 99			
9					
8	80 - 89	80 - 89			
7					
6	70 - 79	70 - 79			
5	60 - 69	60 - 69			
4	55 - 59	55 - 59			
3	50 - 54	50 - 54	Attended	Returned	Submitted
2	40 - 49	40 - 49			
1	0 - 39	0 - 39			
0			Not Attended	Not Returned	Not Submitted

Admission Matrix



Applying for 1st—8th Grade

Students applying to grades 1—8 must score **30 points** on the admission matrix to be eligible for admission to Lake Forest Charter School.

How is the matrix score calculated?

Matrix scores are calculated by adding the points received for each of the **6 components** of the admission matrix to create the final matrix score. All final matrix scores with admission results will be communicated via US Mail by February 28, 2018. Please feel free to contact the admission office at 504-826-7140 or admissions@lakeforestcharter.org with any questions.



Points	GPA*	Reading %	Math %	Orientation	Survey	Attendance
10	3.5 - 4.0	90 - 99	90 - 99			
9		80 - 89	80 - 89			
8	3.0 - 3.49	70 - 79	70 - 79			
7	2.5 - 2.99	55 - 69	55 - 69			
6	2.3 - 2.49	50 - 54	50 - 54			
5	2.0 - 2.29	45 - 49	45 - 49			
4		40 - 44	40 - 44			
3				Attended	Returned	0 - 5 absences
2						6 - 7 absences
1	0.0 - 1.99	0 - 39	0 - 39			8 - 9 absences
0				Not Attended	Not Returned	10 or more absences